

Name: *Cacopsylla affinis* (Löw, 1880)

Synonyms: *Psylla affinis*; *Cacopsylla (Thamnopsylla) affinis*; *Psylla subferruginea* Edwards, 1915

Distribution: Austria, Belgium, Bulgaria, Czech Republic, Finland, France, Germany, Greece, Hungary, Italy, Montenegro, Norway, Romania, Russia, Serbia, Slovakia, Sweden, Switzerland, Ukraine, United Kingdom

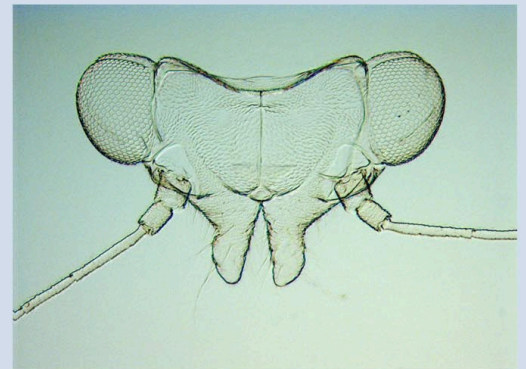
Host plants: *Crataegus* species



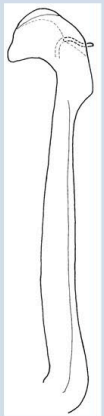
nymph



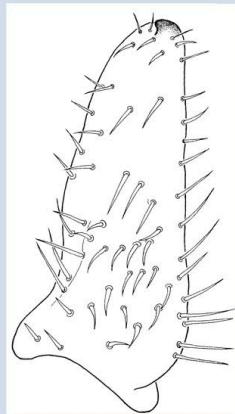
adult (female)



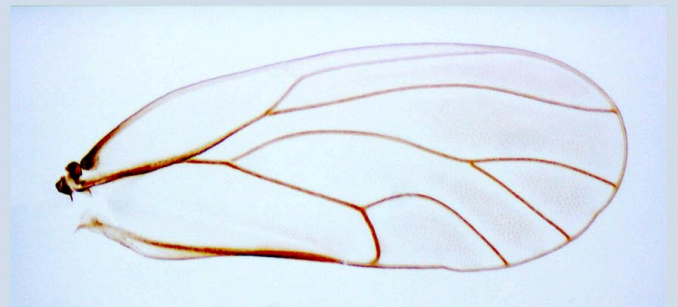
head



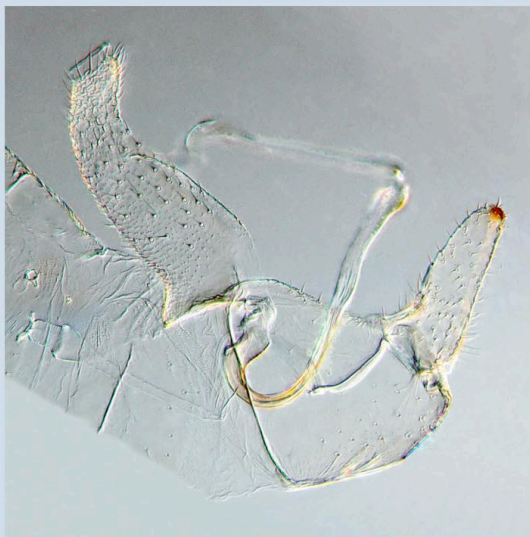
→ distal portion of aedeagus



→ paramere



forewing



male terminalia



female terminalia