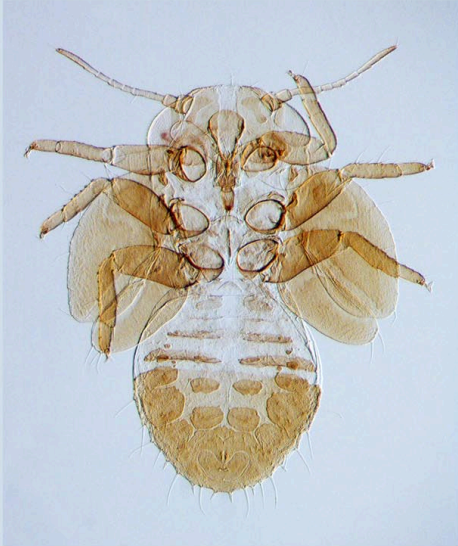


Name: *Cacopsylla pruni* (Scopoli, 1763)

Synonyms: *Chermes pruni*; *Psylla pruni*; *Cacopsylla (Thamnopsylla) pruni*; *Psylla fumipennis* Foerster, 1848

Distribution: Armenia, Austria, Azerbaijan, Belgium, Bulgaria, Czech Republic, Denmark, Finland, France, Georgia, Germany, Iran, Ireland, Italy, Moldova, Norway, Poland, Romania, Russia, Spain, Sweden, Switzerland, Turkey, Ukraine, United Kingdom

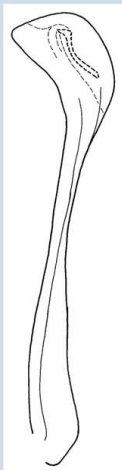
Host plants: *Prunus* species



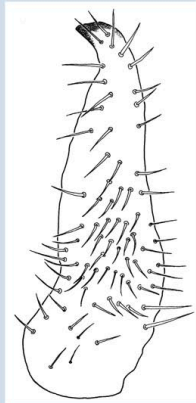
nymph



adult (female)



→ distal portion of aedeagus



→ paramere



head



forewing



male terminalia



female terminalia